

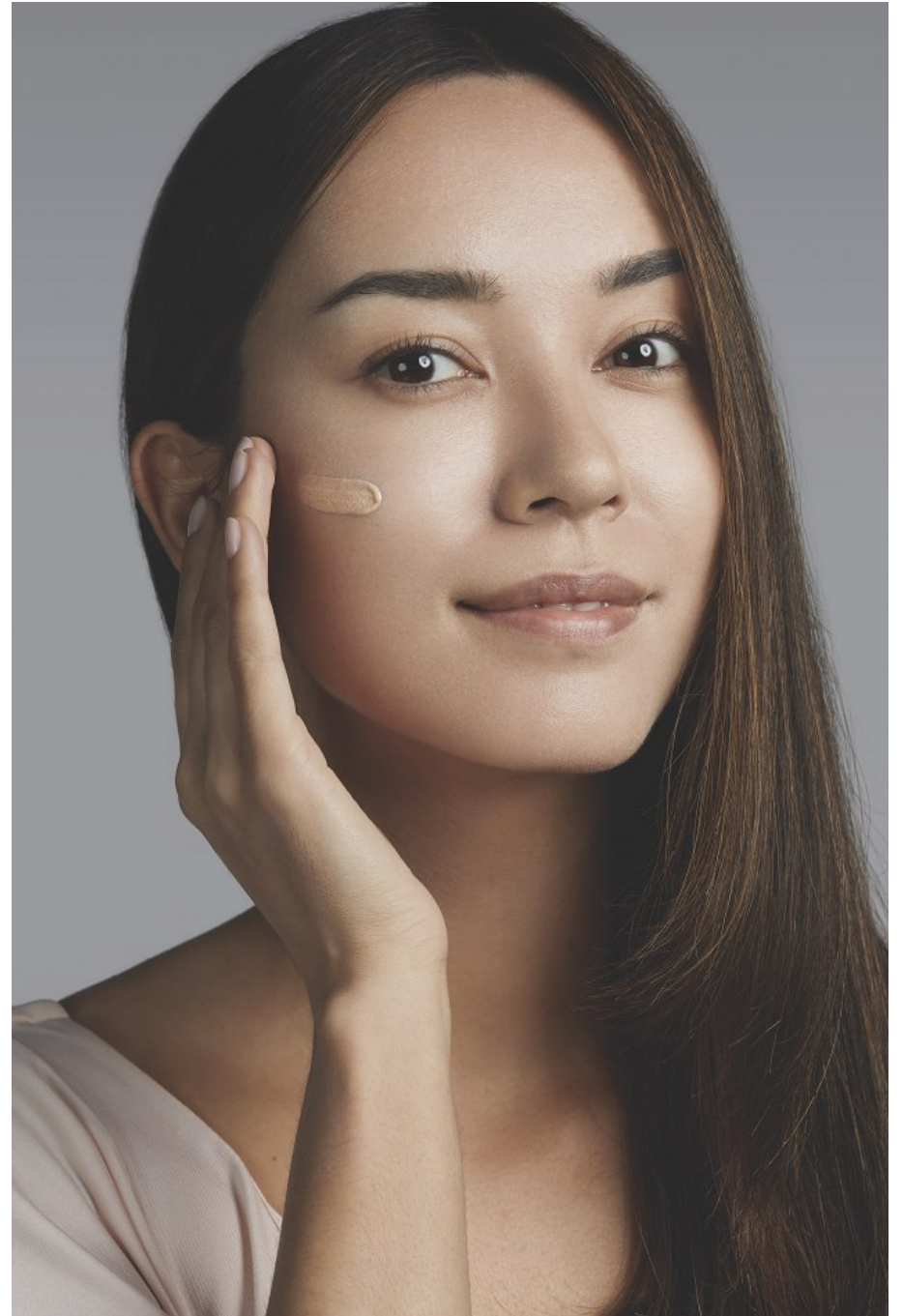


Dani Watanabe Height 5'7" | 170cm Bust 32" | 81cm Waist 25" | 63cm Hips 35" | 89cm
Dress 2 US | 32 EU Shoe 6.5 US | 37.5 EU Hair Brown Eyes Brown

CGM
CAROLINE GLEASON
MANAGEMENT



Dani Watanabe Height 5'7" | 170cm Bust 32" | 81cm Waist 25" | 63cm Hips 35" | 89cm
Dress 2 US | 32 EU Shoe 6.5 US | 37.5 EU Hair Brown Eyes Brown



Dani Watanabe Height 5'7" | 170cm Bust 32" | 81cm Waist 25" | 63cm Hips 35" | 89cm
Dress 2 US | 32 EU Shoe 6.5 US | 37.5 EU Hair Brown Eyes Brown

CGM
CAROLINE GLEASON
MANAGEMENT



Variation in Emotion
掌握唇膏組織質感，展現幻化唇色，成就不同時刻的美。

Rouge Coco Shine #91 \$260
精緻水潤的唇膏，色澤鮮明亮麗，為成熟雙唇添上耀眼光澤，營造明麗活潑的形象。

Rouge Allure #94 \$260
絲滑質澤配上大膽活潑的色調，展現陽光而不造作的感性魅力，高情高義。

Rouge Coco
標誌之作，結
實，結合雙重
Chanel式口

Dani Watanabe Height 5'7" | 170cm Bust 32" | 81cm Waist 25" | 63cm Hips 35" | 89cm
Dress 2 US | 32 EU Shoe 6.5 US | 37.5 EU Hair Brown Eyes Brown

Talent: Dani Watanabe Photo: Michael K. Mode: Daniela W. (Quero)
Makeup: Do Do Au Young Hair: Green Cheung (P. TH Salon) Design: Kim 黃利金客戶提供

LE ROUGE

潮流瞬息萬變。以往女生只愛裸唇，最近紛紛換上鮮豔系——亮紅的、桃紅的、紫紅的或橘子味，萬變唇色宛如新衣，從不嫌多。CHANEL 全新唇膏色調以萬變色彩調配合不同獨特質感，讓唇妝隨時、隨地、隨意完美詮釋豐富情感，大膽宣告無畏真我。



Dani Watanabe Height 5'7" | 170cm Bust 32" | 81cm Waist 25" | 63cm Hips 35" | 89cm
Dress 2 US | 32 EU Shoe 6.5 US | 37.5 EU Hair Brown Eyes Brown

CGM
CAROLINE GLEASON
MANAGEMENT